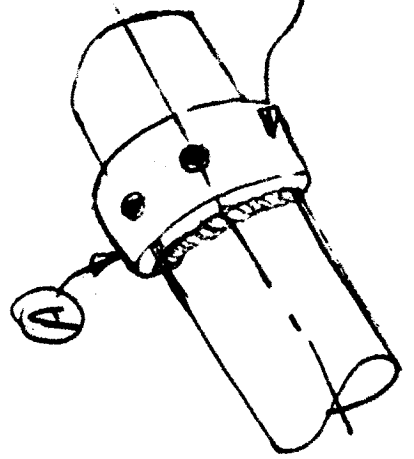
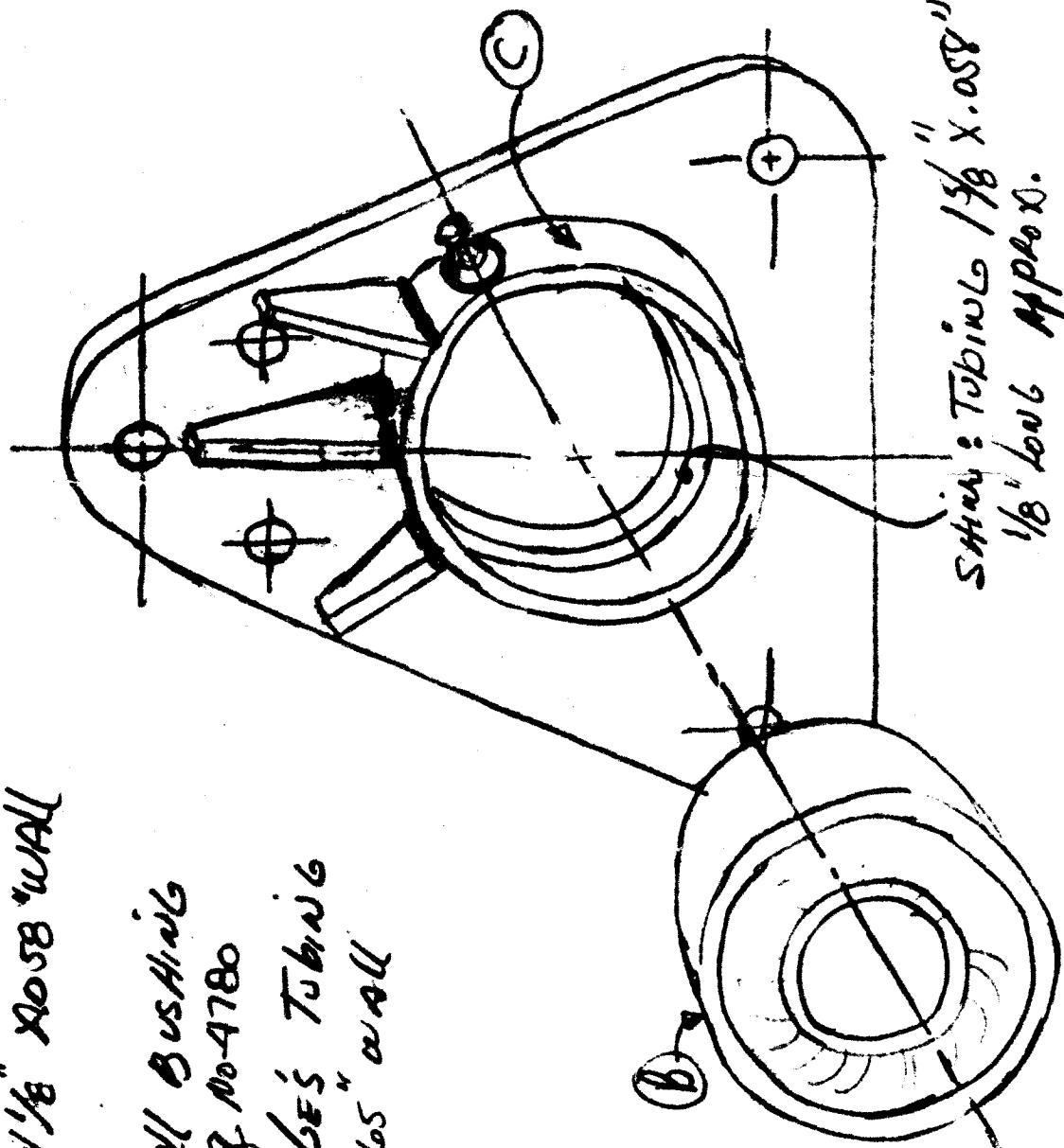


NEW LANDING GEAR BALL BUSHING DRAWINGS

- ① SLEEVE: TUBE $1\frac{1}{8}$ " \times 0.058" WALL
8 $\frac{3}{4}$ " LONG.
- ② TORRINGTON BALL BUSHING
#10SF-16 Catalog No-4780
- ③ REPLACE GEAR GEAR'S TUBING
WITH $1\frac{3}{4}$ " \times 0.065" WALL

NOTE
* GEAR SPAR FITTING
HAS TO BE FITTED
THE SAME WAY.



SLEEVE WELDED TO MAIN LANDING
GEAR TO PREVENT SIDE MOVEMENT.
TAX WELD ONLY WHEN GEAR IS FIXED & SPARS